



European Commission

Eurostat – Unit F.5: Education, health, social protection

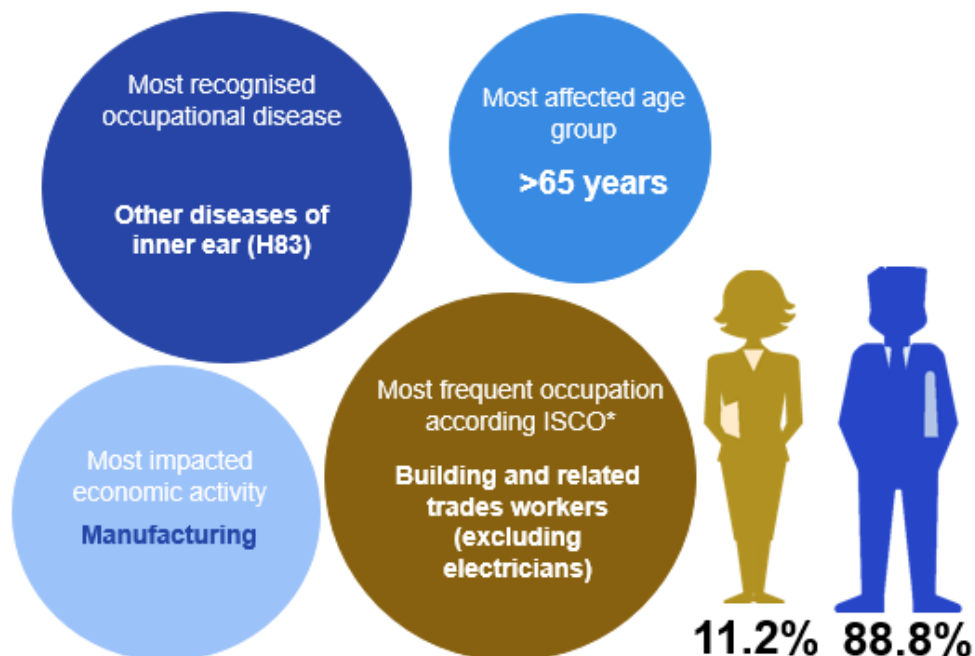
European occupational diseases statistics (EODS) – experimental statistics – Country profile: **Switzerland**

Introduction

European occupational diseases statistics (EODS) are essential elements for the European Commission's strategy to assess the efficiency of Community legislation on health and safety at work. At present, EODS are experimental statistics. Beyond their occurrence, these statistics reflect the way in which the concept of occupational disease is integrated into the national social security or health systems.

This country profile is based on the EODS short list of occupational diseases. It presents information about the occupational diseases at national level (as aggregated data for the signalled period).

Figure 1 – Occupational diseases in a nutshell, 2013-2021

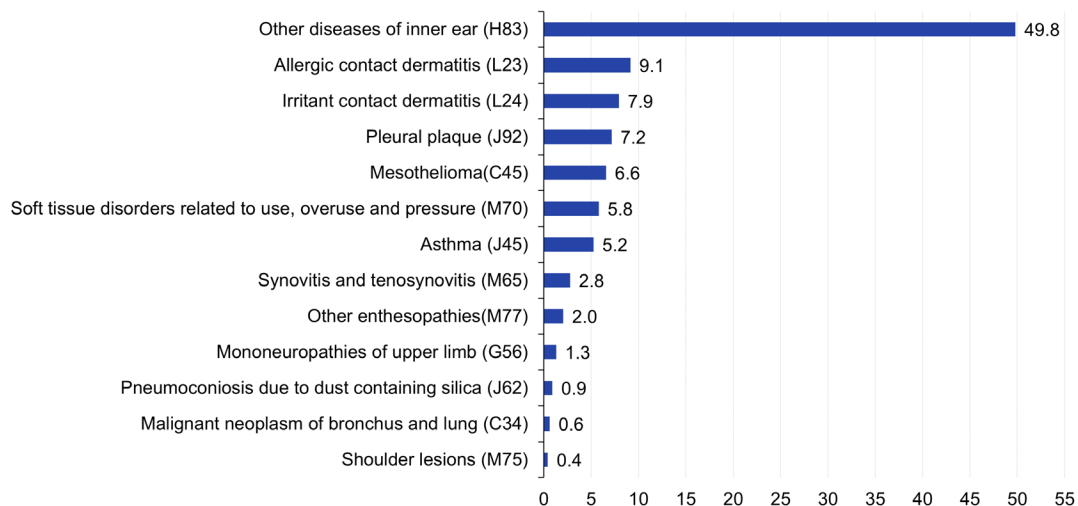


Source: Eurostat EODS extraction

Recognised cases of occupational diseases in EODS short list

Figure 2 – Distribution of the diseases in the short list, 2013-2021

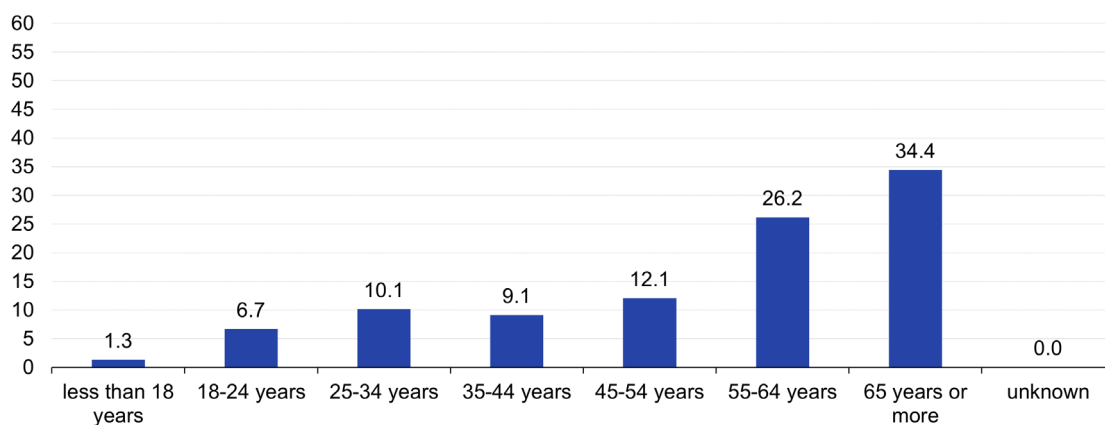
(in %)



Source: Eurostat EODS extraction

Figure 3 – Distribution of occupational diseases in the short list by age group, 2013-2021

(in %)



Source: Eurostat EODS extraction

Table 1 – Most impacted economic activity (NACE) of EODS short list, 2013-2021

(in %)

Economic activities (NACE Rev 2)	NACE code	Percentage
Specialised construction activities	43	22.6%
Manufacture of fabricated metal products, except machinery and equipment	25	10.9%
Manufacture of wood and of products of wood and cork, except furniture; manufacture of articles of straw and plaiting materials	16	7.4%
Construction of buildings	41	4.0%
Wholesale and retail trade and repair of motor vehicles and motorcycle	45	3.5%

Source: Eurostat EODS extraction

Definition

The occupational diseases are diseases that are exclusively or predominantly caused by harmful substances or certain types of work according to a list issued by the Federal Council.

The occupational diseases are also deemed to be other diseases that are proven to have been due exclusively or clearly predominantly to the professional duties of the insured person.

Useful links

- [Experimental statistics – EODS section on Eurostat website](#)
- [EODS short list](#) (PDF)
- [Data](#) (Excel file)
- [Metadata](#) (Excel file)
- [Methodological note](#) (PDF)