



European Commission

Eurostat – Unit F.5: Education, health, social protection

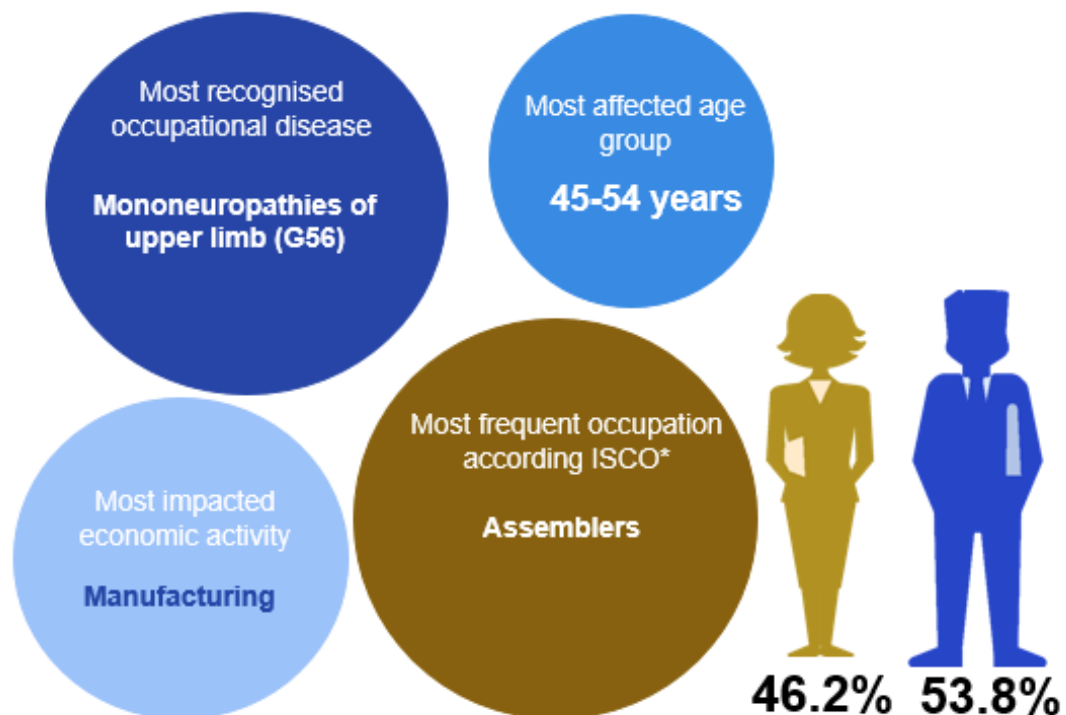
European occupational diseases statistics (EODS) – experimental statistics – Country profile: **Czechia**

Introduction

European occupational diseases statistics (EODS) are essential elements for the European Commission's strategy to assess the efficiency of Community legislation on health and safety at work. At present, EODS are experimental statistics. Beyond their occurrence, these statistics reflect the way in which the concept of occupational disease is integrated into the national social security or health systems.

This country profile is based on the EODS short list of occupational diseases. It presents information about the occupational diseases at national level (as aggregated data for the signalled period).

Figure 1 – Occupational diseases in a nutshell, 2013-2021

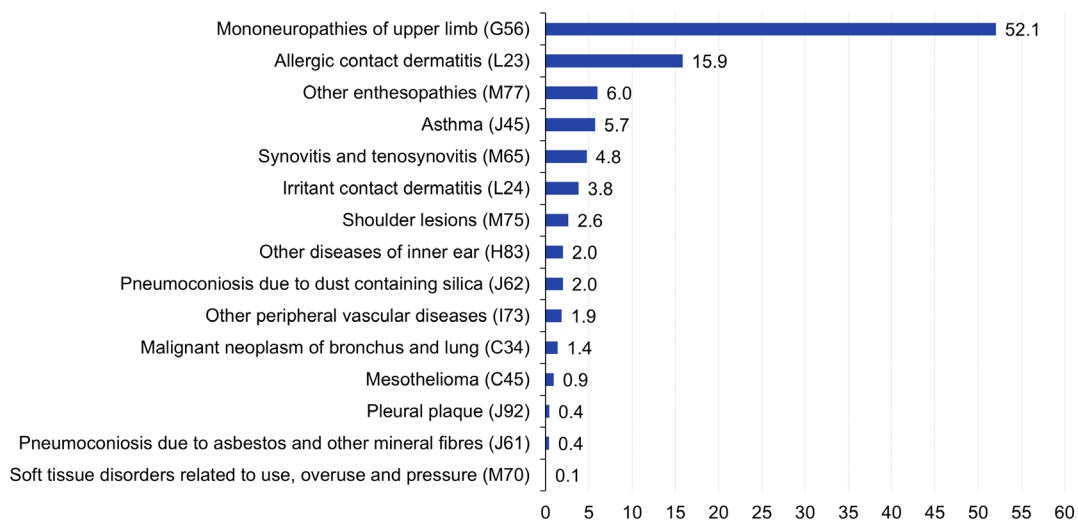


Source: Eurostat EODS extraction

Recognised cases of occupational diseases in EODS short list

Figure 2 – Distribution of the diseases in the short list, 2013-2021

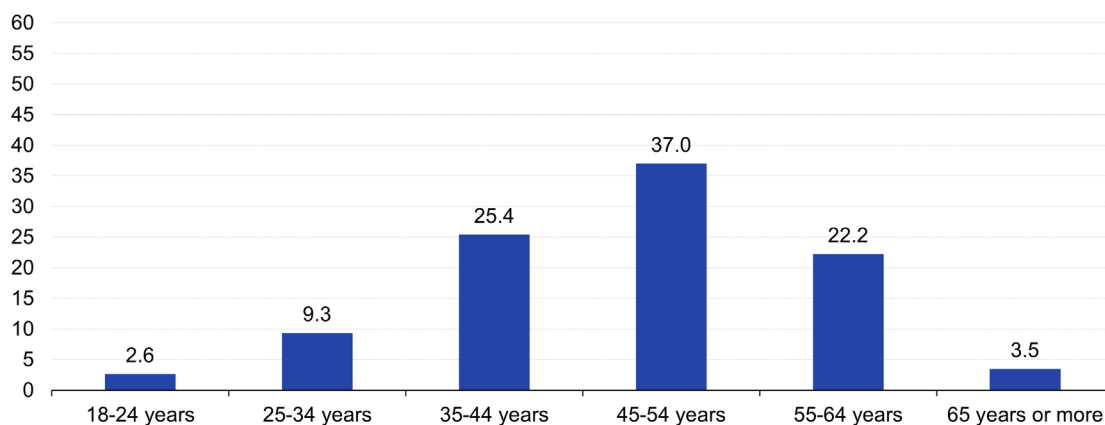
(in %)



Source: Eurostat EODS extraction

Figure 3 – Distribution of occupational diseases in the short list by age group, 2013-2021

(in %)



Source: Eurostat EODS extraction

Table 1 – Most impacted economic activity (NACE) of EODS short list, 2013-2021

(in %)

Economic activities (NACE Rev 2)	NACE code	Percentage
Manufacture of motor vehicles, trailers and semi-trailers	29	17.8%
Manufacture of fabricated metal products, except machinery and equipment	25	12.2%
Manufacture of basic metals	24	7.1%
Manufacture of machinery and equipment n.e.c.	28	5.3%
Mining of coal and lignite	05	5.2%

Source: Eurostat EODS extraction

Definition

An occupational disease is a disease due to the adverse effects of chemical, physical, biological or other harmful factors if it occurred under conditions described in the List of Occupational Diseases. Occupational diseases also include acute poisonings caused by the adverse effects of chemical substances.

Notes

The reported share of recognized occupational diseases in the Czech Republic is based on the total number of commonly agreed range of diagnoses selected for comparison of occupational disease statistics in EU countries. For this reason, the total number of cases of occupational diseases and the corresponding share can be significantly different from the ones reported at the national level.

Useful links

- [Experimental statistics – EODS section on Eurostat website](#)
- [EODS short list](#) (PDF)
- [Data](#) (Excel file)
- [Metadata](#) (Excel file)
- [Methodological note](#) (PDF)
- [CZ National data](#)